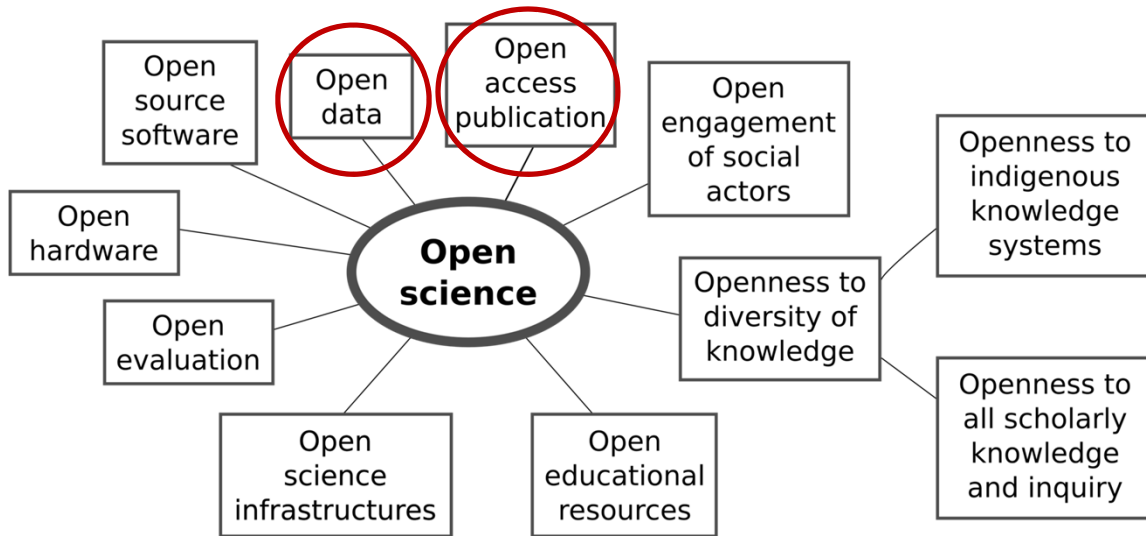


**Entrepôts de données & data papers: pour une meilleure visibilité et
mise à disposition des données des collections du CBGP**

Contexte



OPEN SCIENCE

→ Stocker / sécuriser des jeux de données dans des entrepôts de données

→ Publier des data papers

→ Associer les deux pour gagner en visibilité

Entrepôt de données de recherche - Research data repository



CIRAD Dataverse ([CIRAD - Centre de coopération internationale en recherche agronomique pour le développement](#))

Données de recherche du CIRAD

Metrics

20 745 Downloads

[Contact](#) [Share](#)

Les activités du CIRAD relèvent des **sciences du vivant**, des **sciences sociales** et des **sciences de l'ingénieur** appliquées à l'**agriculture**, à l'**alimentation**, à l'**environnement** et à la **gestion des territoires** pour le **développement durable des régions tropicales et méditerranéennes**.

CIRAD's activities concern the life sciences, social sciences and engineering sciences, applied to agriculture, the environment and territorial management for the sustainable development of tropical and Mediterranean regions.

Find

[Advanced Search](#)

Dataverses (54)

Datasets (269)

Files (1 892)

Dataverse Category

1 to 10 of 323 Results

Sort ▾

MYCOPLASME (CIRAD)

14 janv. 2022 [UMR ASTRE](#)



Équipe mycoplasme.



CBGP

Find

[Advanced Search](#)

Dataverses (1)

Datasets (7)

Files (0)

Dataverse Category

Laboratory (1)

Publication Year

2021 (2)

2020 (1)

2019 (2)

2018 (3)

Subject

Agricultural Sciences (7)

Mathematical Sciences (6)

Computer and Information Science (5)

Earth and Environmental Sciences (5)

Social Sciences (1)

Keyword Term

Schistocerca gregaria (4)

Acrididae (3)

Mathematical models (3)

Pest management (3)

Pest monitoring (3)

1 to 8 of 8 Results

Sort ▾

UMR CBGP (CIRAD-Centre de coopération internationale en recherche agronomique pour le développement)

11 juil. 2018



L'UMR **CBGP** – Centre de Biologie pour la Gestion des Populations – a pour vocation de comprendre

Multi-agent model ALMMAS 1.0.2: source code

15 oct. 2018 - UMR CBGP



GAY, Pierre-Emmanuel; PIOU, Cyril, 2018, "Multi-agent model ALMMAS 1.0.2: source code", <https://doi.org/10.18167/DVN1/ARUTUO>, CIRAD Dataverse, V2

Multi-agent model ALMMAS 1.0.2 source code for NetLogo (v. 6.0.4)

Contact Affiliation: CIRAD, UMR **CBGP**, Montpellier, France

Author Affiliation: CIRAD, UMR **CBGP**, Montpellier, France

Multi-agent model ALMMAS 1.4: source code

25 juil. 2019 - UMR CBGP



GAY, Pierre-Emmanuel; PIOU, Cyril, 2019, "Multi-agent model ALMMAS 1.4: source code", <https://doi.org/10.18167/DVN1/MJHW2L>, CIRAD Dataverse, V1

Multi-agent model ALMMAS 1.4 source code for NetLogo (v. 6.0.4)

Contact Affiliation: CIRAD, UMR **CBGP**, Montpellier, France

Author Affiliation: CIRAD, UMR **CBGP**, Montpellier, France

Multi-agent model ALMMAS 1.5: source code

20 janv. 2021 - UMR CBGP



7 datasets CBGP : modélisation / génotypage / phénotypage



Biodiversity Data Journal 9: e64499
doi: 10.3897/BDJ.9.e64499



Research Article

DNA barcoding for bio-surveillance of emerging pests and species identification in Afrotropical Prioninae (Coleoptera, Cerambycidae)

Marion Javal[‡], John S Terblanche[‡], Desmond E Conlong^{§,‡}, Norbert Delahaye[‡],
Elizabeth Grobbelaar[¶], Laure Benoit[#], Carlos Lopez-Vaamonde^{¶,*,}, Julien M Haran[#]

7 individus sur 70 déposés au CBGP



Biodiversity Data Journal 9: e66452
doi: 10.3897/BDJ.9.e66452



Research Article

Barcoding pest species in a biodiversity hot-spot: the South African polyphagous broad-nosed weevils (Coleoptera, Curculionidae, Entiminae)

Steffan Hansen[‡], Pia Addison[§], Laure Benoit[‡], Julien M Haran[‡]

72 vouchers déposés au CBGP

Papiers en lien avec un projet BOLD en miroir qui contient les séquences et les photos HD des vouchers.

BOLD SYSTEMS

BOLD SYSTEMS Project & Dataset Search Code Record Search

Record List - CURSA

Specimens

72 Specimens

GPS: 63 / 72

Country: 72 / 72

Images: 38 / 72

Barcode Compliant: 0 / 72

Sequences

68 Sequences

COI-SP: 68/72

Taxonomy

Common family: Curculionidae

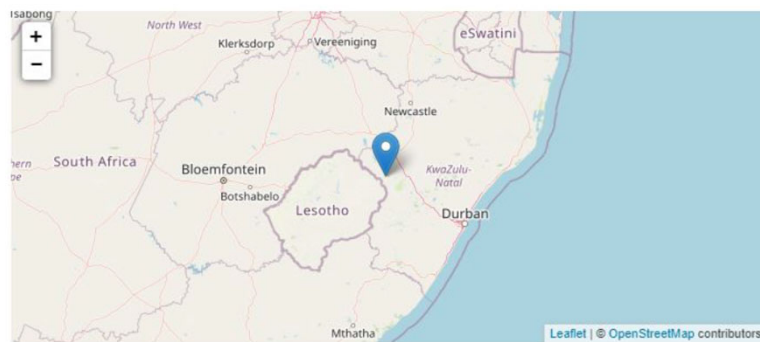
- Entiminae (subfamily): 70
- Cyclominae (subfamily): 2

Issues

- Seqs lacking successful traces: 0
- Seqs with stop codons: 0
- Contaminated seqs: 0
- Problematic records flagged: 0

100 records per page

Select Identification Specimen Page Sequence Page Extra Info BIN Record Flags Legend Bases [Ambig] Tags



j-HAR01668-0101 - Barcoding pest species in biodiversity hot-spot: the South African polyphagous broad nosed weevils (Coleoptera, Curculionidae, Entiminae) [CURSA]

Specimen Details

Sample ID: j-HAR01668-0101	Number of Images: 10
Protein ID: G100000101	Image Resolution: 1024
Project: CURSA	Registration: 1
Institution: Centre for Systematics and Biodiversity, University of KwaZulu-Natal	Link Status: None
Field ID: j-HAR01668-0101	Associated Name: Associated Specimens
Collector Code: j-HAR01668-0101	Associated Name: Associated Specimens
Reference Code: None	

Taxonomy

Phylum: Arthropoda	Class: Insecta	Order: Coleoptera	Family: Curculionidae	Subfamily: Entiminae	Tribe: Cyclomyzini	Genus: Cyclomyza	Species: Cyclomyza sp.
Genus: Cyclomyza	Species: Cyclomyza sp.	Authority: Curculionidae: Entiminae: Cyclomyzini: Cyclomyza	Number of specimens: 1	Number of images: 10	Number of sequences: 1	Number of specimens with images: 1	Number of specimens with sequences: 1

Barcode Index Number(s)

Barcode	Barcode	Barcode
ATCC01668-0101	ATCC01668-0101	ATCC01668-0101

Curculionidae Data

Species	Genus	Family
Cyclomyza sp.	Cyclomyza	Curculionidae

data INRAE

Portail Data INRAE (INRAE)

Génération datapaper

Statistiques

210 960 téléchargements

Contact Partager

cbgp



Chercher

Recherche avancée

✓ Dataverses (0)

✓ Datasets (5)

✓ Fichiers (0)

Année de publication

2021 (2)

2020 (1)

2018 (2)

Data Origin

aggregate data (2)

observational data (2)

1 à 5 de 5 résultats

↑↓ Tri ▾

Arthemis database



9 déc. 2020

INRAE-CBGP, 2020, "Arthemis database", <https://doi.org/10.15454/TBGRIB>, Portail Data INRAE, V1

The database hosts a dense diversity of arthropod species that are pests of different cultures throughout the world, as well as their natural enemies plus some species of conservation concern (Coleoptera Carabidae, Tenebrionidae ; Lepidoptera Papilionidae ; Neuroptera). Our main...

Author Name: INRAE-CBGP

Distributor Abbreviation: CBGP

Related Material: Insects and mites collected for scientific research purposes since 2010 for the UMR CBGP (Centre de

Distributor URL: https://www6.montpellier.inrae.fr/cbgp_eng/

CBGP - Small mammal Collection



29 nov. 2018

Centre de Biologie pour la Gestion des Populations, 2018, "CBGP - Small mammal Collection", <https://doi.org/10.15454/WWNUPO>, Portail Data INRAE, V1

... . The collection is deposited at the UMR1062 Centre de Biologie pour la Gestion des Populations (**CBGP** ...

Producer URL: <https://www6.montpellier.inra.fr/cbgrp>

Contact Name: Comité directeur du plateau "Collections" du **CBGP**

Producer Logo URL: <https://www6.montpellier.inra.fr/cbgrp>

Link to data: http://www6.montpellier.inra.fr/cbgrp_eng/Platforms/Collections-platform

Producer Abbreviation: **CBGP**

Keyword Term: **CBGP**

CBGP - Continental Arthropod Collection



9 avr. 2020

Centre de Biologie pour la Gestion des Population, 2018, "CBGP - Continental Arthropod Collection", <https://doi.org/10.15454/D6XAKL>, Portail Data INRAE, V2

... center : **CBGP** - Centre de Biologie pour la Gestion des Populations, in Montferrier-sur-Lez (F-34980 ...

Producer Logo URL: <https://www6.montpellier.inra.fr/cbgrp>

Link to data: <http://www6.montpellier.inra.fr/cbgrp/Plateaux-techniques/Plateau-technique-Collections/Collections>

Producer Abbreviation: **CBGP**

Keyword Term: **CBGP**

Arthemis database

Version 1.1



INRAE-CBGP, 2020, "Arthemis database", <https://doi.org/10.15454/TBGRIB>, Portail Data INRAE, V1

Citer le dataset ▾ Pour en apprendre davantage sur le sujet, consulter le document [Data Citation Standards \[en\]](#).

Contact

Partager

Statistiques d'utilisation sur les datasets ⓘ

145 consultations ⓘ

0 téléchargement ⓘ

0 citation ⓘ

Description ⓘ

The database hosts a dense diversity of arthropod species that are pests of different cultures throughout the world, as well as their natural enemies plus some species of conservation concern (Coleoptera Carabidae, Tenebrionidae ; Lepidoptera Papilionidae ; Neuroptera). Our main target groups belong to Coleoptera (Cerambycidae, Chrysomelidae Bruchinae, etc.) ; Diptera (Tephritidae) ; Hemiptera (Aleyrodidae, Aphididae (see below), Coccoidea, Heteroptera and Psylloidea) ; Hymenoptera (Chalcidoidea) and Lepidoptera [Crambidae (Ostrinia), Noctuidae (Spodoptera), Tortricidae] as well as to some mite families (Phytoseiidae, Tetranychidae).

This database contains :

- **Information on insects and mites collected worldwide for scientific research purposes;** some specimens can be provided on request.
- **DNA sequences (barcodes)** of arthropod species sequenced in INRAE, CIRAD and SupAgro laboratories. We chose to sequence the mitochondrial Cytochrome c oxidase I standard barcode fragment (COI) as well as the nuclear internal transcribed spacer 2 (ITS2) to provide a reliable identification tool for all developmental stages of our target species. For some species, sequences from other genes studied for phylogenetic purposes are also available (Cyt b, Elongation Factor 1- α , 28s D2-D3 and D4-D5, 18s, Mago Nashi etc.). Arthemis also hosts information about the distribution of the sequenced species, their biology and ecology as well as taxonomic information (synonyms, common names, etc.) and pictures. By clicking the identification tools button in the navigation bar, you can compare your query sequences to our library of genetic sequences and get an identification (see database guidelines for more information). (2020-12-08)

Subject ⓘ

Medicine, Health and Life Sciences; Agricultural Sciences

Mot-clé ⓘ

Insects, Insect pests, Insects--Collection and preservation, Mites, Science--Zoology--Invertebrates--Arthropoda--Insects--Collection and preservation, DNA, DNA data banks, Web databases

Link to data ⓘ

<http://arthemisdb.supagro.inra.fr/>

Fichiers

Métadonnées

Conditions

Versions

Welcome to the Artemis Database !

on ARTHropod Ecology, Molecular Identification and Systematics

The database hosts a dense diversity of arthropod species that are pests of different cultures throughout the world, as well as their natural enemies plus some species of conservation concern (Coleoptera Carabidae, Tenebrionidae ; Lepidoptera Papilionidae ; Neuroptera).

Our main target groups belong to Coleoptera (Cerambycidae, Chrysomelidae Bruchinae, etc.) ; Diptera (Tephritidae) ; Hemiptera (Aleyrodidae, Aphididae (see below), Coccoidea, Heteroptera and Psylloidea) ; Hymenoptera (Chalcidoidea) and Lepidoptera [Crambidae (Ostrinia), Noctuidae (Spodoptera), Tortricidae] expanded to some mite families (Phytoseiidae, Tetranychidae).

This database contains :

- **Information on insects and mites collected worldwide for scientific research purposes since 1850**; some preserved specimens can be provided for research on request.

- **DNA sequences (barcodes)** of arthropod species sequenced in INRAE, CIRAD and SupAgro laboratories. We chose to sequence the mitochondrial Cytochrome c oxidase I standard barcode fragment (COI) as well as the nuclear internal transcribed spacer 2 (ITS2) to provide a reliable identification tool for all developmental stages of our target species. For some species, sequences from other genes studied for phylogenetic purposes are also available (Cyt b, Elongation Factor 1- α , 28s D2-D3 and D4-D5, 18s, Mago Nashi etc.). Artemis also hosts information about the distribution of the sequenced species, their biology and ecology as well as taxonomic information (synonyms, common names, etc.) and pictures. By clicking the identification tools button in the navigation bar, you can compare your query sequences to our library of genetic sequences and get an identification (see database guidelines for more information).



Search a taxon

Use our tool to find a taxon



Specimen search

Use our tool to find a specimen



Blast

Realise pairwise sequence alignments

CBGP - Small mammal Collection

Version 1.8



Centre de Biologie pour la Gestion des Populations, 2018, "CBGP - Small mammal Collection", <https://doi.org/10.15454/WWNUPO>, Portail Data INRAE, V1

Citer le dataset - Pour en apprendre davantage sur le sujet, consulter le document [Data Citation Standards \[en\]](#).

Contact

Partager

Statistiques d'utilisation sur les datasets

174 consultations

0 téléchargement

0 citation

Description

An international reference collection of small mammals

The collection was created by INRA in the 1930's in Jouy-en-Josas, and was then fed with dead or living specimens, as well as tissue and DNA/RNA samples by researchers from INRA and IRD. Now located in Montpellier, this world-referenced collection contains about 100.000 samples, mainly from rodents: 2.250 complete specimens, 15.000 skulls, 42.000 tissue samples in ethanol, 23.000 DNA samples, 5.500 RNA samples, 500 cell cultures and 300 chromosome preparations. These samples belong to Cricetidae (from France), Muridae (from Europe, Asia and Africa), Gerbillinae (from west and north Africa), and even less Scuriidae, Nesoyidae and Dipodidae families. The collection also features specimens of the Soricomorpha, Erinaceomorpha orders, and several carnivorous. Samples are referenced in the Small mammals database that will be open to the public in 2016. The collection is deposited at the UMR1062 Centre de Biologie pour la Gestion des Populations (CBGP) in Montpellier, France. The CBGP is a research laboratory that carries out research in the fields of systematics, genetics and ecology relevant to the management of populations and communities of organisms for the purposes of agriculture, public health and biodiversity.

The Small Mammals Collection is a part of BRC4env, one of the 5 specialized pillars of the French Research Infrastructure "Agricultural Resources for Research" (AgroBRC-RARE, <http://www.enseignementsup-recherche.gouv.fr/cid99437/ressources-agronomiques-pour-la-recherche-rare.html>) federating BRCs: animals as CRB-Anim, plant as CRB-Plantes, micro-organisms as CIRM, environmental resources as BRC4Env, and forests as CRB-Forets. BRC4Env includes BRCs and collections hosted by INRA, IRD, CIRAD, CNRS, technical and higher education institutions. (2018-11-29)

Subject

Earth and Environmental Sciences

Mot-clé

Collection, Rodent, small mammals, france, sénégal, CBGP, bénin, niger

Related Publication

Mougin C., Artige E., Marchand F., Mondy S., Ratié C., Sellier N., Castagnone-Sereno F., Cœur D'Acier A., Esmenjaud D., Faivre-Primot C., Granjon L., Hamelet V., Lange F., Pagès S., Rimet F., Ris N., Sallé G. 2018. BRC4Env, a network of Biological Resource Centres for research in environmental and agricultural sciences. *Env. Sci. Pollut. Res.* null: <https://prodinra.inra.fr/record/426628>

Link to data

http://www6.montpellier.inra.fr/cbpg_eng/Platforms/Collections-platform

Fichiers

Métadonnées

Conditions

Versions

Ce dataset ne contient aucun fichier.

Collections platform

Committee : [Laurent Granjon](#), [Armelle Coeur d'Acier](#) & [Emmanuelle Artige](#)

Membership: 20 project leaders + 13 ITA

Contact : colcbgp@inrae.fr

Platforms

- > [Molecular biology platform](#)
- > [Collections platform](#)
- > [Computing platform](#)
- > [SEPA platform](#)



Des données ouvertes pour une science durable au Sud

DataSuds (IRD)

[En savoir plus...](#)

 Statistiques

14 422 Téléchargements

[✉ Contact](#) [🔄 Partager](#)

L' **entrepôt de données DataSuds** propose aux scientifiques de l'IRD et à leurs partenaires un service pour **diffuser, préserver et valoriser** leurs données de recherche en facilitant leur identification et leur **citation**. Il constitue l'un des éléments du dispositif de la science ouverte pour le Sud que promeut l'IRD.



Comment déposer des données ?

→ [service support](#) : demander à utiliser (ou à créer) un espace de dépôt dédié à un laboratoire, un projet, une équipe de recherche... → [mode d'emploi](#)



UMR PHIM



UMR Eco&Sols



UMR CBGP



UMR PHARMADEV



UMR CBGP (INRAE, IRD, CIRAD, Montpellier SupAgro) → [website](#)

[DataSuds](#) >

[✉ Contact](#) [🔄 Partager](#)

Centre de Biologie pour la Gestion des Populations

Le CBGP développe des recherches en systématique, génétique, écologie et évolution des populations et des communautés d'organismes d'intérêt en agronomie, santé humaine et biodiversité. Les petits mammifères, rongeurs en particulier, et les arthropodes, insectes en particulier, sont les modèles biologiques principaux étudiés dans l'unité. L'objectif du CBGP est de caractériser la diversité de ces organismes, d'en comprendre la structure et les facteurs qui la modifient afin d'en prédire l'évolution dans un contexte de changements globaux. Le CBGP conduit une recherche de type académique tout en faisant en sorte que les résultats de ses programmes de recherche puissent déboucher sur l'élaboration de scénarios ou d'outils d'aide à la décision pour la gestion des bioagresseurs ou la préservation d'espèces menacées.

-  **Dataverses (0)**
-  **Jeux de données (2)**
-  **Fichiers (2)**

Source de métadonnées

- [DataSuds \(1\)](#)
- [Harvested \(1\)](#)

Date de publication

- [2020 \(1\)](#)

Sujet

- [Sciences de la terre et de l'environnement \(1\)](#)
- [Médecine, santé et sciences de la vie \(1\)](#)

Thématique scientifique

- [Sciences du milieu \(1\)](#)
- [Sciences du monde animal \(1\)](#)

1 à 2 de 2 Résultats

↑↓ Trier ▾

Commensal small mammal trapping data in Southern Senegal, 2012-2015

7 avr. 2021



Granjon, Laurent; Fossati, Odile, 2020, "Commensal small mammal trapping data in Southern Senegal, 2012-2015", <https://doi.org/10.23708/PQTQDA>, DataSuds, V3, UNF:6:z0xxA3IfKeeu8etAwtMubQ== [fileUNF]

As part of projects aimed at studying 1) the role of invasive black rat populations in the emergence of zoonotic diseases in Southeastern Senegal, and 2), the evolutionary consequences of parasites in *R. rattus* and *M. musculus* invasions in Senegal, we conducted a series of field...

CBGP - Small mammal Collection

23 avr. 2020



Centre de Biologie pour la Gestion des Populations, 2021, "CBGP - Small mammal Collection", <https://doi.org/10.15454/MWNUPO>

An international reference collection of small mammals The collection was created by INRA in the 1930's in Jouy-en-Josas, and was then fed with dead of living specimens, as well as tissue and DNA/RNA samples by researchers from INRA and IRD. Now located in Montpellier, this world...

This dataset is harvested from another repository. Clicking the link will take you directly to the source of the data.

CBGP - Small mammal Collection

23 avr. 2020



Centre de Biologie pour la Gestion des Populations, 2021, "CBGP - Small mammal Collection", <https://doi.org/10.15454/WWNUPO>

An international reference collection of small mammals The collection was created by INRA in the 1930's in Jouy-en-Josas, and was then fed with dead of living specimens, as well as tissue and DNA/RNA samples by researchers from INRA and IRD. Now located in Montpellier, this world...

This dataset is harvested from another repository. Clicking the link will take you directly to the source of the data.



Renvoie vers Data INRAE

Sujet 

Sciences de la terre et de l'environnement; Médecine, santé et sciences de la vie

Mot-clé 

Community ecology, Microhabitat description, Biological invasion, Rodents, West Africa

Fichiers

Métadonnées

Conditions d'utilisation

Versions

Changer l'affichage

Tableau

Arborescence

Chercher dans ce jeu de données...



Filtrer par

Type de fichier : Tout ▾

Accès : Tout ▾

Libellé du fichier : Tout ▾

↕ Trier ▾

1 à 2 de 2 Fichiers

 Télécharger ▾



[Commensal_small_mammals_southern_Senegal_2012-2015_Data-V3.tab](#)

Small_mammals_Senegal/

Données tabulaires - 2.1 Mo

Publié 7 avr. 2021

12 Téléchargements

24 Variables,, 13263 Observations UNF:6:ZO7g...e3A== 

Results of small mammal trapping in commensal habitat, southern Senegal 2012-2015

Data **Survey**




[Commensal_small_mammals_southern_Senegal_2012_2015_var_info.tab](#)

Small_mammals_Senegal/

Données tabulaires - 4.5 Ko

Publié 18 déc. 2020

13 Téléchargements

12 Variables,, 53 Observations UNF:6:NCX3...bIA== 

Detailed description of the variables (data and code dictionary)

Documentation




Data Paper

Ecology, 102(10), 2021, e03470
© 2021 The Authors. *Ecology* © 2021 The Ecological Society of America



Volume 102, Issue 10
October 2021
e03470

Commensal small mammal trapping data in Southern Senegal, 2012–2015: where invasive species meet native ones

LAURENT GRANJON ^{1,5}, ODILE FOSSATI-GASCHIGNARD,¹ EMMANUELLE ARTIGE,¹ KHALILOU BÂ,² CARINE BROUAT,¹
AMBROISE DALECKY,³ CHRISTOPHE DIAGNE,^{1,2} MAMOUDOU DIALLO,² PHILIPPE GAUTHIER,¹ PASCAL HANDSCHUMACHER,⁴
MAMADOU KANE,² LÆTITIA HUSSE,² YOUSSEUPHA NIANG,² SYLVAIN PIRY,¹ NATHALIE SARR,²
ALIOU SOW,² AND JEAN-MARC DUPLANTIER¹

¹*Centre de Biologie pour la Gestion des Populations (CBGP, IRD, CIRAD, INRAE, Montpellier SupAgro, Université Montpellier),
755 Avenue du Campus Agropolis, Campus de Baillarguet CS 30016, Montpellier/Lez Cedex 34988 France*

²*Centre de Biologie pour la Gestion des Populations (CBGP – UMR22 IRD), Laboratoire BIOPASS2, Campus IRD-ISRA de
Bel-Air, BP1386, Dakar CP18524 Senegal*

³*Laboratoire Population Environnement Développement (LPED – UMR 151 IRD), IRD/Aix Marseille Université, Centre St Charles,
case 10, 3 place Victor Hugo, CS 80249, Marseille, Cedex 03 13331 France*

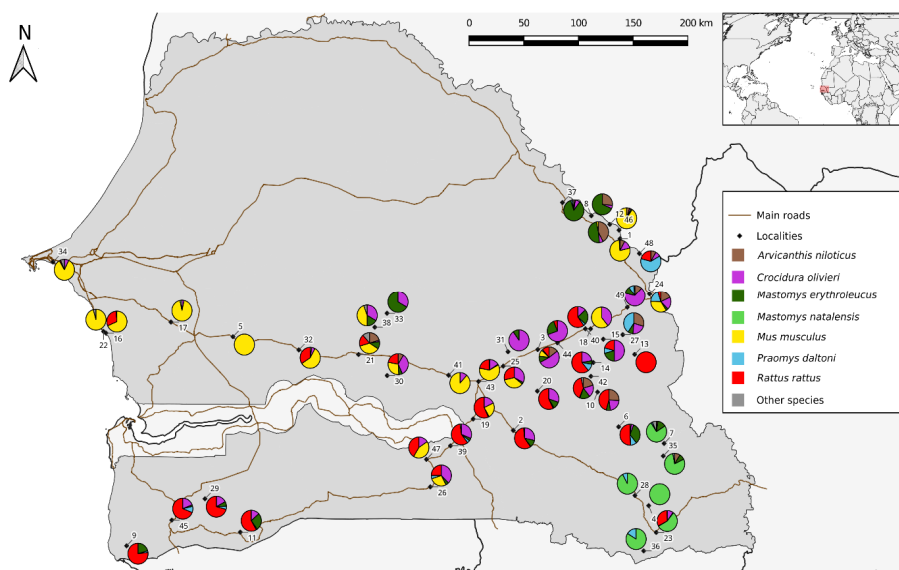
⁴*SESSTIM, Sciences Economiques & Sociales de la Santé & Traitement de l'Information Médicale, Aix Marseille Université
INSERM/IRD, 27 Boulevard Jean Moulin, Marseille Cedex 05 13385 France*

Citation: Granjon, L., et al. 2021. Commensal small mammal trapping data in Southern Senegal, 2012–
2015: where invasive species meet native ones. *Ecology* 102(10):e03470. 10.1002/ecy.3470

Tableau de données (13263 lignes / 24 colonnes), 1.7 Mo, le même que celui déposé dans DataSuds (cf <https://doi.org/10.23708/PQTQDA>, DataSuds, V3.)

Fichier de métadonnées décrivant en détail le JDD + (autorisé dans *Ecology*), traitement préliminaire des infos

1. Small mammal community composition per locality



2. Relative efficiency of the two types of traps used (Table 2)

Result / Trap type	wm	sh	Total
Empty	4323	3589	7912
Closed and empty	1220	782	2002
<i>A. niloticus</i>	78	63	141
<i>Crocidura olivieri</i>	76	480	556
<i>Crocidura sp.</i>	1	12	13
<i>M. erythroleucus</i>	124	154	278
<i>M. natalensis</i>	128	180	308
<i>M. musculus</i>	122	823	945
<i>P. daltoni</i>	30	61	91
<i>R. rattus</i>	514	290	804
Other small mammals	12	8	20
Rodents escaped	4	7	11
Other (non small mammals)	68	98	166
Non functioning	8	8	16
Total captures	1157	2176	3333
Total small mammals captures	1089	2078	3167

Perspectives

- Monter en régime dans la publication / le dépôt de JDD (sécurisation des données, mise à disposition, visibilité des collections...)
- Combiner avec la participation à portails, observatoires et autres outils de compilation de données de biodiversité (cf GBIF, DISSCO s/c RECOLNAT, BOLD...)
- Lier JDD déposés dans Dataverse et data papers (en amont de publications + ciblées sur questions / hypothèses)

Merci de votre attention